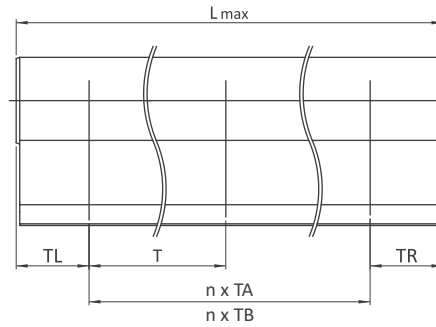
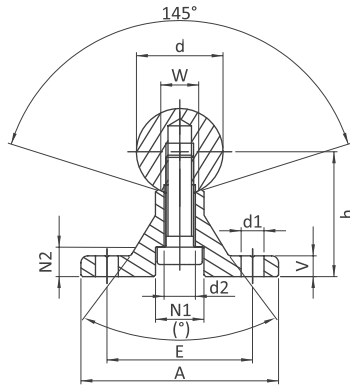


Tragschienen

Flanschausführung hoch

Shaft support rail units

Flange series high



Abmessungen Dimensions (mm)

Gewicht Weight

| Type | Ød | A | h | V | N1 | N2 | Ød1 | Ød2 | W | (°) | E | TA | TB | Gew kg |
|------------|----|----|----|---|----|------|-----|-----|----|-----|----|-----|-----|-----------|
| PTSA-20-.. | 20 | 56 | 38 | 6 | 12 | 9.5 | 6.6 | 6.6 | 11 | 60 | 37 | 100 | 150 | 3.90 |
| PTSA-25-.. | 25 | 60 | 42 | 6 | 15 | 11.5 | 6.6 | 9 | 14 | 60 | 42 | 120 | 200 | 5.52 |
| PTSA-30-.. | 30 | 74 | 53 | 8 | 17 | 11.5 | 9 | 11 | 14 | 60 | 51 | 150 | 200 | 8.22 |
| PTSA-40-.. | 40 | 78 | 60 | 8 | 19 | 13 | 9 | 11 | 18 | 60 | 55 | 200 | 300 | 12.94 |

Bestellbeispiel / Ordering designation



- ✓ Gewicht mit Welle
- ✓ die Wellenunterstützung ist je nach Tragschienenlänge aus mehreren Teilstücken zusammengesetzt
- ✓ $T_L \text{ min} = T_R \text{ min} = 20 \text{ mm}$
- ✓ weight including shaft
- ✓ depending on the length of the shaft support rail unit, the support rail is composed of several individual sections
- ✓ $T_L \text{ min} = T_R \text{ min} = 20 \text{ mm}$